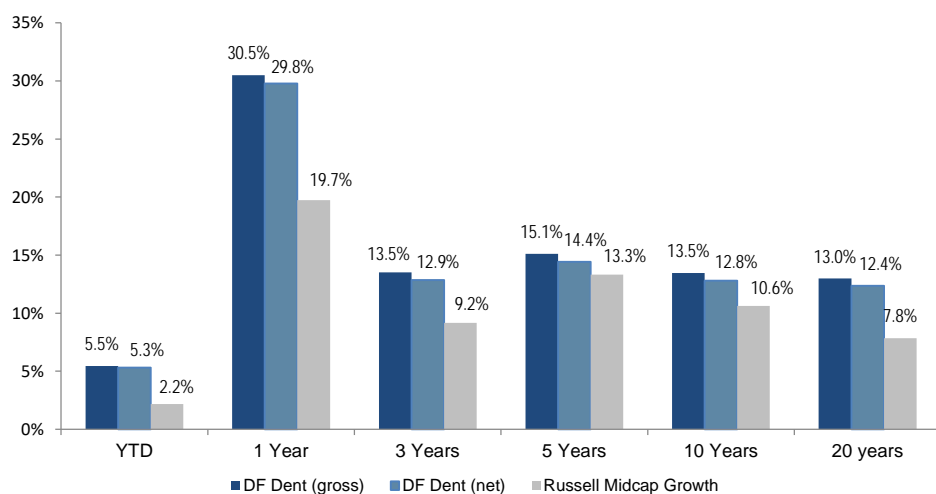


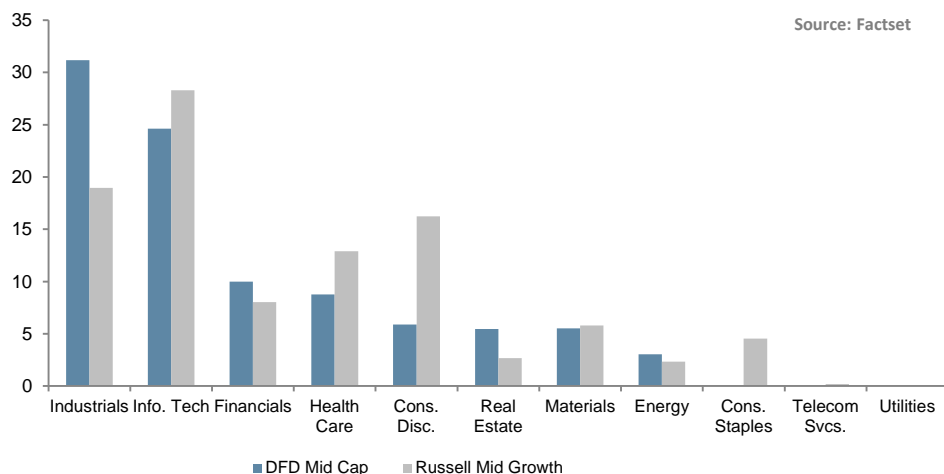
### Performance



### Top Ten Holdings

STOCK	% of Portfolio
Verisk Analytics Inc. (VRSK)	6.26%
Ecolab Inc. (ECL)	5.51%
ANSYS, Inc. (ANSS)	3.84%
Illumina Inc. (ILMN)	3.80%
Moody's Corp. (MCO)	3.80%
Roper Technologies Inc. (ROP)	3.61%
Tyler Technologies Inc. (TYL)	3.58%
Red Hat Inc. (RHT)	3.45%
SEI Investments Co. (SEIC)	3.41%
Waste Connections Inc. (WCN)	3.37%

### Sector Weights



### Profile

- Investment Adviser since 1976
- 100% employee owned
- High conviction, concentrated portfolios
- Low turnover / long term horizon
- \$4.8B in assets under management
- \$800m in Midcap Growth Strategy
- Intensive internal research process
- High active share manager

### Philosophy

DF Dent and Company invests in companies we expect to grow and appreciate at levels faster than the overall economy and stock market. We look for management teams that are highly ethical and are exceptional leaders. The firm wants to invest in companies that have a successful business model and are competitively differentiated. Investment success is attained by building a concentrated portfolio of companies that have attractive long-term opportunities and that operate in favorable industry sectors.

### The DF DENT Difference

**Focus on internal research** enables independent thinking and conviction

**Disciplined approach** identifies exceptional growth companies

**Concentrated portfolio** enables only “Best-in-Class” companies to make the cut

**Time-tested process** has produced strong results in both up and down markets for over 40 years

**Low turnover, minimal transaction costs** and long-term investment horizon result in tax-efficient portfolios

**Employee ownership** and independence align our interests with clients

**Diversity of backgrounds** and experience create differences in opinion that help to evaluate investments from multiple analytical perspectives

# Midcap Growth – 1Q18

**DF DENT**  
AND COMPANY

CHARACTERISTICS 1Q18	DF DENT	RUSSELL MIDCAP GROWTH
Weighted Average Market Cap	\$15,504	\$16,366
Weighted Median Market Cap	\$13,466	\$13,613
# of Securities	33	421
Dividend Yield	0.49%	0.97%
P/E using FY2 Est.	24.6	18.4
Hist 3Yr Sales Growth	8.8%	7.6%
Est 3-5 Yr EPS Growth	13.6%	12.6%
Operating Margin	16.9%	16.6%
LT Debt/Capital	35.5	43.7
TTM Dollar Turnover	25.97%	
5-Yr Upside/Downside Capture	99.65/84.26	

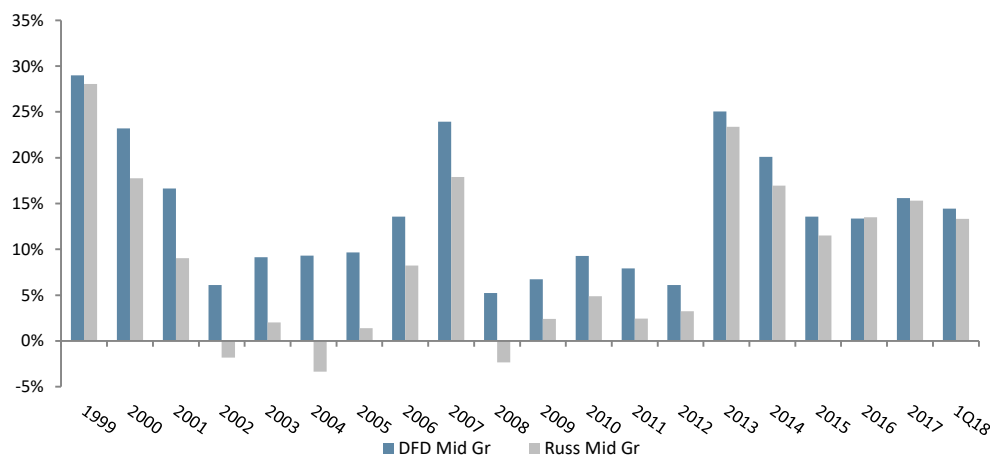
## How Do We Add Value

**Research** - We are intensely focused on our internal research process and finding great stocks, *not* on marketing.

**Consistency** - We are patient investors, have a steadfast investment philosophy and share a uniquely stable workforce.

**Culture** - We have a strong corporate culture that puts client interests first, encourages diversity of thought, shares a passion for investing, and promotes integrity above all else.

## DF DENT– 5 Year Rolling Net Returns vs. Russell Midcap Gr.



## Portfolio Managers

**Matthew Dent, CFA®**-President

**Bruce Kennedy, CFA®**-Vice President

**Gary Mitchell, J.D.** -Vice President

**Tom O'Neil, CFA®** -Vice President

## Active Share

Represents the share of portfolio holdings that differ from the benchmark

0-20% - passive

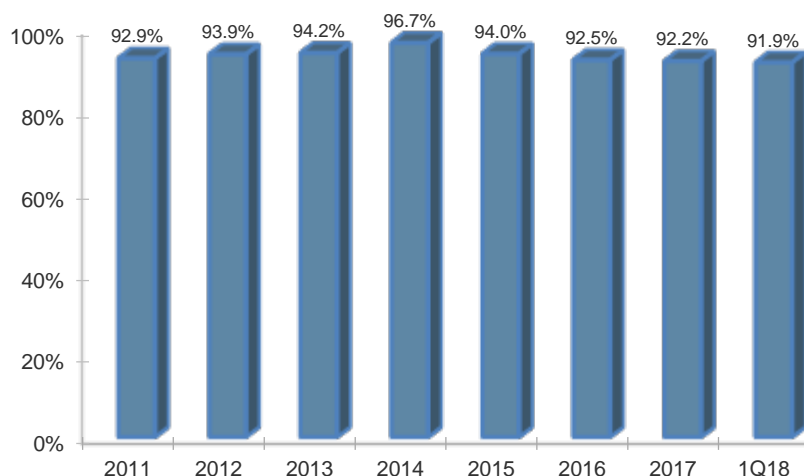
20-60%- closet indexers

60% and above- active managers

Studies show that over the long term, portfolios with the highest active share significantly outperform\*

\*Cremers, Martijn and Petjisto, Antti - How Active is Your Fund Manager? A New Measure that Predicts Performance (March 31, 2009)

## Active Share –Midcap Growth vs. Russell Midcap Growth



## DF DENT AND COMPANY

INVESTMENT COUNSEL EST. 1976

400 E. Pratt Street, Seventh Floor  
Baltimore, MD 21202

410 837 2544

[info@dfdent.com](mailto:info@dfdent.com)

[www.dfdent.com](http://www.dfdent.com)

Past performance does not guarantee future results. Returns include reinvestment of dividends and other earnings.