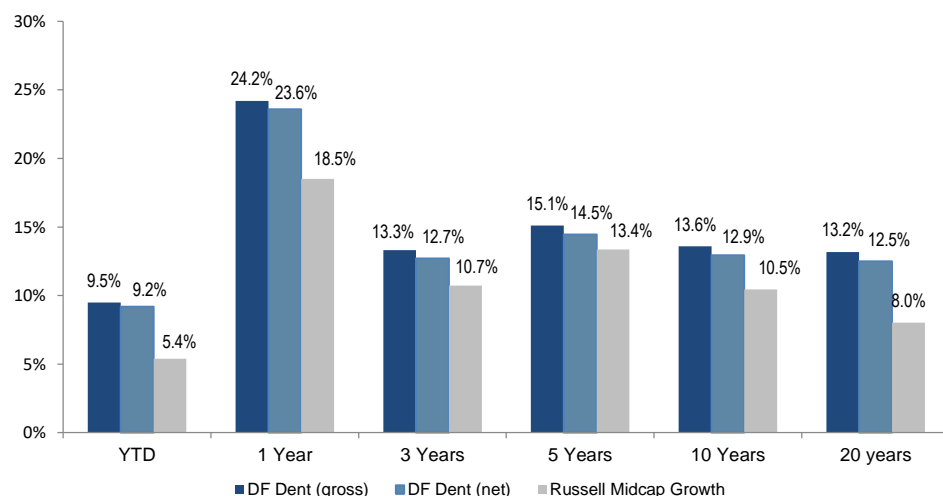


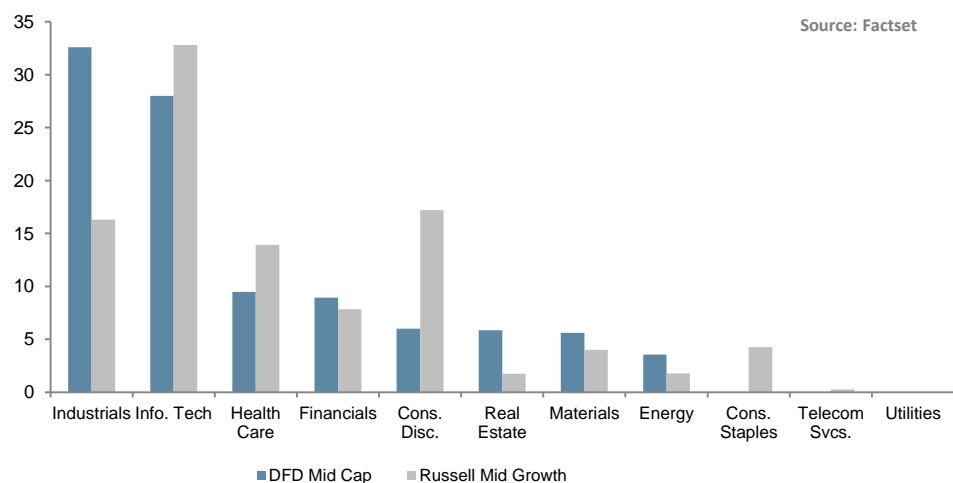
Performance



Top Ten Holdings

STOCK	% of Portfolio
Verisk Analytics Inc. (VRSK)	6.46%
Ecolab Inc. (ECL)	5.62%
Illumina, Inc. (ILMN)	4.61%
ANSYS, Inc. (ANSS)	4.26%
Moody's Corp. (MCO)	4.00%
Tyler Technologies Inc. (TYL)	3.69%
CarMax, Inc. (KMX)	3.69%
Fastenal Company (FAST)	3.57%
Core Laboratories NV (CLB)	3.55%
Roper Technologies, Inc. (ROP)	3.54%

Sector Weights



Profile

- Investment Adviser since 1976
- 100% employee-owned
- High conviction, concentrated portfolios
- Low turnover / long term horizon
- \$5B in firm AUM
- \$860m in Midcap Growth Strategy
- Intensive internal research process
- High active share manager

Philosophy

DF Dent and Company invests in companies we expect to grow and appreciate at levels faster than the overall economy and stock market. We look for management teams that are highly ethical and are exceptional leaders. The firm wants to invest in companies that have a successful business model and are competitively differentiated. Investment success is attained by building a concentrated portfolio of companies that have attractive long-term opportunities and that operate in favorable industry sectors.

The DF Dent Difference

Focus on internal research enables independent thinking and conviction

Disciplined approach identifies exceptional growth companies

Concentrated portfolio enables only "Best-in-Class" companies to make the cut

Time-tested process has produced strong results in both up and down markets for over 40 years

Low turnover, minimal transaction costs and long-term investment horizon result in tax-efficient portfolios

Employee ownership and independence align our interests with clients

Diversity of backgrounds and experience create differences in opinion that help to evaluate investments from multiple analytical perspectives

Midcap Growth – 2Q18

DF DENT
AND COMPANY

CHARACTERISTICS 2Q18	DF DENT	RUSSELL MIDCAP GROWTH
Weighted Average Market Cap	\$16,319	\$15,450
Weighted Median Market Cap	\$14,620	\$14,091
# of Securities	33	415
Dividend Yield	0.5%	0.8%
P/E using FY2 Est.	24.8x	19.4x
Hist 3Yr Sales Growth	10.6%	14.9%
Est 3-5 Yr EPS Growth	14.6%	16.4%
Operating Margin	16.6%	15.9%
LT Debt/Capital	40.2	45.2
TTM Dollar Turnover	23.5%	
5-Yr Upside/Downside Capture	100.7/86.7	

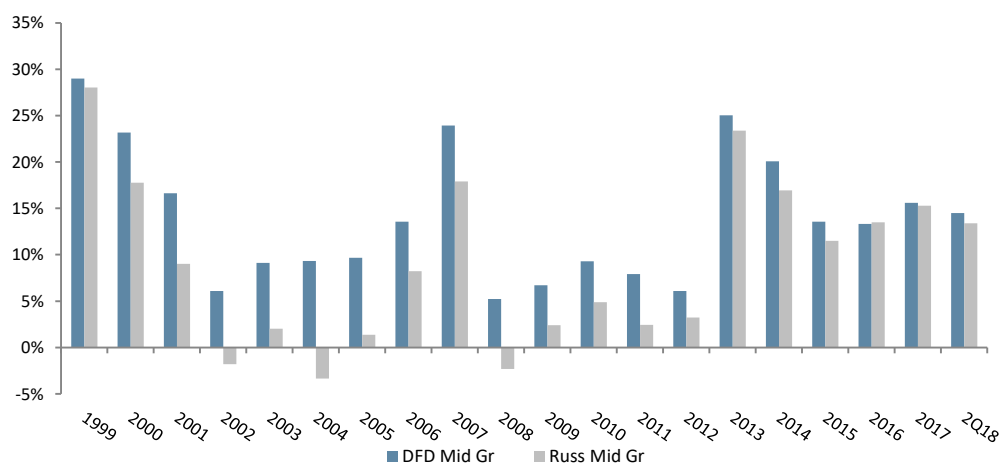
How We Add Value

Research - We are intensely focused on our internal research process and finding great stocks, *not* on marketing.

Consistency - We are patient investors, have a steadfast investment philosophy and share a uniquely stable workforce.

Culture - We have a strong corporate culture that puts client interests first, encourages diversity of thought, shares a passion for investing, and promotes integrity above all else.

DF DENT– 5 Year Rolling Net Returns vs. Russell Midcap Gr.



Portfolio Managers

Matthew Dent, CFA®-President
Bruce Kennedy, CFA®-Vice President
Gary Mitchell, J.D. -Vice President
Tom O'Neil, CFA® -Vice President

Active Share

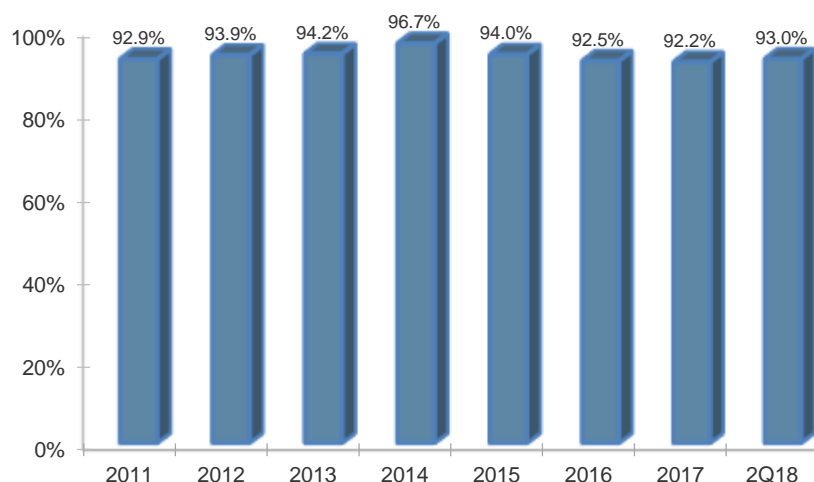
Represents the share of portfolio holdings that differ from the benchmark

- 0-20% - passive
- 20-60% - "closet indexers"
- 60% and above - active managers

Studies show that over the long term, portfolios with the highest active share significantly outperform*

**Cremers, Martijn and Petjisto, Antti - How Active is Your Fund Manager? A New Measure that Predicts Performance (March 31, 2009)*

Active Share – Midcap Growth vs. Russell Midcap Growth



DF DENT AND COMPANY
 INVESTMENT COUNSEL EST. 1976
 400 E. Pratt Street, Seventh Floor
 Baltimore, MD 21202
 410 837 2544
info@dfdent.com
www.dfdent.com

Past performance does not guarantee future results. Returns include reinvestment of dividends and other earnings.