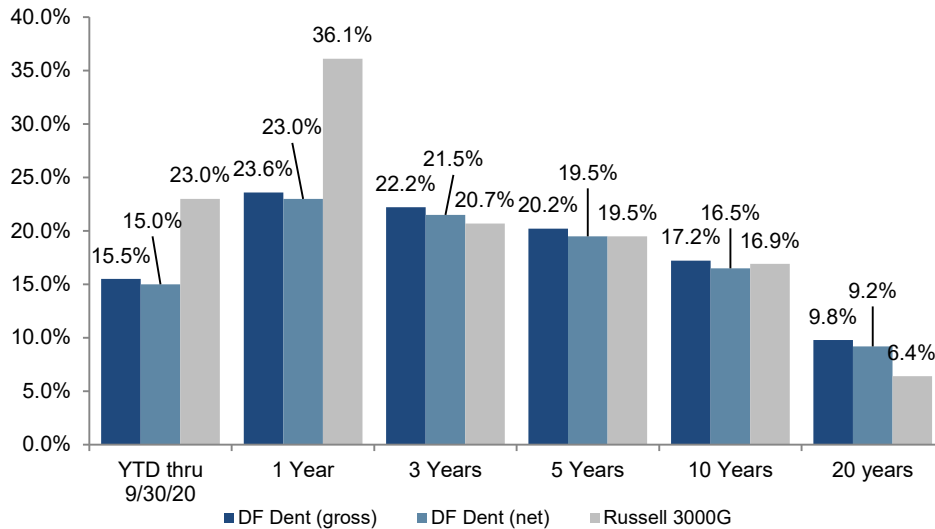


All Cap Growth – 3Q20

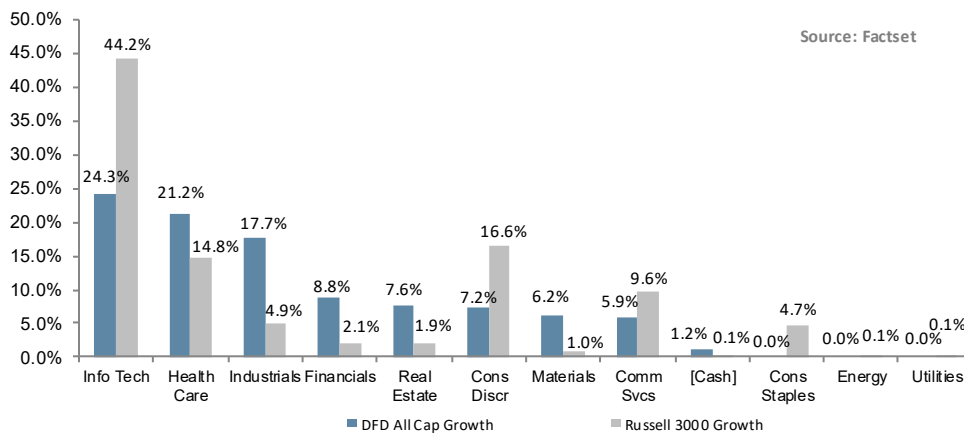
Performance



Top Ten Holdings

Stock	42.8% of Portfolio
Verisk Analytics Inc. (VRSK)	5.1%
Waste Connections Inc. (WCN)	4.7%
ANSYS Inc. (ANSS)	4.7%
Vulcan Materials Co. (VMC)	4.2%
Ecolab Inc. (ECL)	4.2%
Markel Corp. (MKL)	4.2%
Cable One Inc. (CABO)	4.1%
Moody's Corp. (MCO)	4.0%
SBA Communications Corp. (SBAC)	3.8%
Bio-Techne Corp. (TECH)	3.8%

Sector Weights



Past performance does not guarantee future results. Returns include reinvestment of dividends and other earnings.

Profile

- All Cap Investment Adviser since 1976
- 100% employee owned
- High conviction, concentrated portfolios
- Low turnover / long term horizon
- \$8.4B in total firm assets
- Intensive internal research process
- High active share manager

Philosophy

DF Dent and Company invests in companies we expect to grow and appreciate at levels faster than the overall economy and stock market. We look for management teams that are highly ethical and are exceptional leaders. The firm wants to invest in companies that have successful business models and are competitively differentiated. Investment success is attained by building a concentrated portfolio of companies that have attractive long-term opportunities and that operate in favorable industry sectors.

The DF Dent Difference

Focus on internal research enables independent thinking and conviction

Disciplined approach identifies exceptional growth companies

Concentrated portfolio enables only “Best-in-Class” companies to make the cut

Time-tested process has produced strong results in both up and down markets for over 40 years

Low turnover, minimal transaction costs and long-term investment horizon result in tax-efficient portfolios

Employee ownership and independence align our interests with clients

Diversity of backgrounds and experience create differences in opinion that help to evaluate investments from multiple analytical perspectives

All Cap Growth – 3Q20

CHARACTERISTICS	DF DENT	RUSSELL 3000 GROWTH
Weighted Average Market Cap	\$167,282	\$625,830
Weighted Median Market Cap	\$35,342	\$220,521
# of Securities	40	1,539
Dividend Yield	0.38%	0.80%
P/E using FY2 Est	35x	28x
Price/Book	6x	10x
Hist 3 Yr EPS Growth	26%	26%
Est 3-5 Yr EPS Growth	13%	14%
Operating Margin	22%	22%
TTM Dollar Turnover	21%	

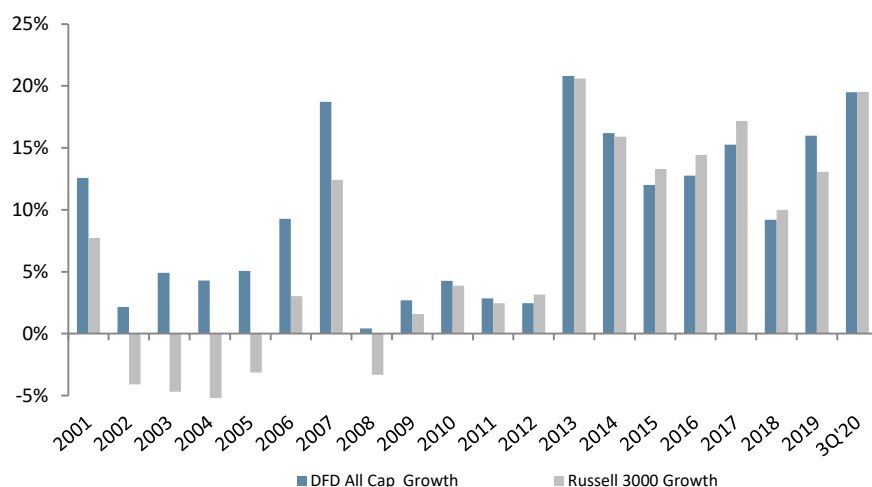
How We Add Value

Research - We are intensely focused on our internal research process and finding great stocks, *not* on marketing.

Consistency - We are patient investors, have a steadfast investment philosophy and share a uniquely stable workforce.

Culture - We have a strong corporate culture that puts client interests first, encourages diversity of thought, shares a passion for investing, and promotes integrity above all else.

DF DENT– 5 Year Rolling Net Returns vs. Russell 3000 Gr.



Portfolio Managers

Daniel F. Dent, CFA®-Chairman

Matthew F. Dent, CFA®-President

Bruce Kennedy, CFA®-Vice President

Tom O'Neil, CFA®-Vice President

Active Share

Represents the share of portfolio holdings that differ from the benchmark

0-20% - passive

20-60% - "closet indexers"

60% and above - active managers

Studies show that over the long term, portfolios with the highest active share significantly outperform*

*Cremers, Martijn and Petjisto, Antti - How Active is Your Fund Manager? A New Measure that Predicts Performance (March 31, 2009)

DF DENT AND COMPANY

INVESTMENT COUNSEL EST. 1976

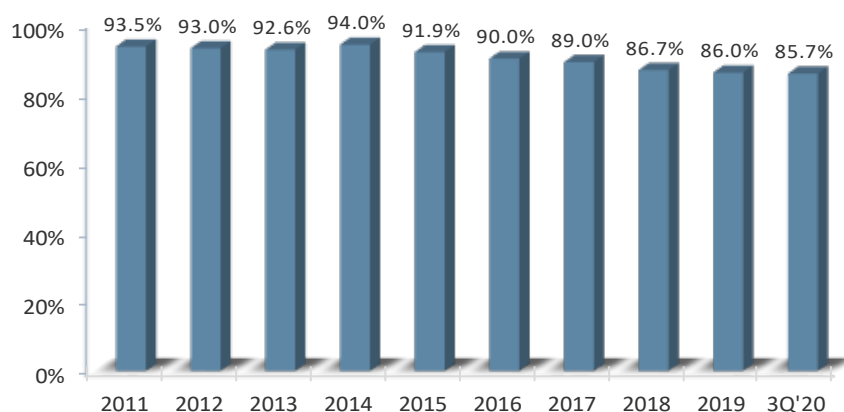
400 E. Pratt Street, Seventh Floor
Baltimore, MD 21202

410 837 2544

info@dfdent.com

www.dfdent.com

Active Share – All Cap Growth vs. Russell 3000 Growth



Past performance does not guarantee future results. Returns include reinvestment of dividends and other earnings.